

Featuring the Industry's Most Advanced and Fully Optimized Process Options, Including:

- Activated Sludge Technology
- Selector Technology
- Membrane Bioreactor
- Aerobic Digestion to achieve Class "B" Biosolids
- Nitrification/Denitrification
- Tertiary and Ultrafiltration
- Phosphorus Removal
- Disinfection Systems

Ashbrook Simon-Hartley Also Provides a Comprehensive Line of Fully Optimized Equipment and Systems, Including:

- Aeration Basins and Equipment, Including Diffused Aeration Systems
- Membrane Bioreactors
- Clarifiers
- Liquid/Solids Separation Technologies
 - Tertiary Filtration
 - ▲ Denitrification
 - ▲ Rapid Rate/Gravity Sand
 - ▲ Continuous Backwash
 - Disk Filters
 - Ultrafiltration Membrane
 - High Performance Belt Filter Press Technologies
 - High Performance Belt Thickeners
 - Advanced Centrifuge Technologies
- Disinfection
 - Solution Feeders
 - Ultra-Violet
- Pasteurization and Digestion to Achieve Class "A" Biosolids
- Flow Equalization
- Primary Treatment
- Lift Stations
- Bar Screens and Grit Collection
- Electrical Controls & Automated Systems (PLC and SCADA)
- Ground Water Contamination Remediation
- Industrial Process Wastewater Treatment
- Advanced Flow Control Technologies
 - Sluice Gates and Weir Gates
 - Flap Valves (Rigid and Flexible)
 - Stop Logs and Gates
- Mobile Dewatering

Plus, Comprehensive Installation Services As Well As Optimized Rebuilds, Retrofits and Spare Parts.

The products pictured, described, or listed in this publication are illustrative only and are subject to change as appropriate.

Ashbrook Simon-Hartley® is a registered trademark of Ashbrook Simon-Hartley Operations LP. SBR-Plus™ and Multi-Jack™ system are trademarks of Ashbrook Simon-Hartley Operations LP.

© 2009 Ashbrook Simon-Hartley Operations LP
Printed in U.S.A.



Try the eAnswers Cyber-Space Option

For more information:
Visit our website at
www.as-h.com

In North America—
Contact Ashbrook Simon-Hartley
at 800-362-9041
Fax: 281-449-1324
Address: 11600 East Hardy
Houston, TX 77093-1098



In Europe, Asia, and the Africas—
Contact Ashbrook Simon-Hartley, Ltd.
at +44 (0) 1782 578650
Fax: +44 (0) 1782 260534
Address: 10/11 Brindley Court
Lyndale Business Park
Newcastle-under-Lyme
Staffordshire
ST5 9QH UK

Contact Ashbrook Simon-Hartley, Ltd.
at +971 (4) 407 0782
Fax: +971 (4) 339 1414
DUBAI Branch
Address: P.O. Box 282486
Dubai
UAE

In South America—
Contact Ashbrook Chile S.A.
at +56 (2) 224 7858
Fax: +56 (2) 224 9525
Address: Avenida Presidente Kennedy 5757
Torre Oriente, Oficina 501
Comuna de Las Condes
Santiago, Chile

TREATMENT SYSTEMS

SBR-PLUS™

TRUE BATCH SEQUENCING SYSTEM

TREATMENT SYSTEMS

SBR-PLUS™

TRUE BATCH SEQUENCING SYSTEM

PRECISION DECANTING WITH ADVANCED PROCESS

DESIGN, EQUIPMENT AND CONTROL

TECHNOLOGY

TREATMENT SYSTEMS

SBR-PLUS™

TRUE BATCH SEQUENCING SYSTEM

PRECISION DECANTING WITH ADVANCED PROCESS

DESIGN, EQUIPMENT AND CONTROL

TECHNOLOGY

TREATMENT SYSTEMS

SBR-PLUS™

TRUE BATCH SEQUENCING SYSTEM

PRECISION DECANTING WITH ADVANCED PROCESS

DESIGN, EQUIPMENT AND CONTROL

TECHNOLOGY

TREATMENT SYSTEMS

SBR-PLUS™

TRUE BATCH SEQUENCING SYSTEM

PRECISION DECANTING WITH ADVANCED PROCESS

DESIGN, EQUIPMENT AND CONTROL

TECHNOLOGY

TREATMENT SYSTEMS

SBR-PLUS™

TRUE BATCH SEQUENCING SYSTEM

PRECISION DECANTING WITH ADVANCED PROCESS

DESIGN, EQUIPMENT AND CONTROL

TECHNOLOGY

TREATMENT SYSTEMS

SBR-PLUS™

TRUE BATCH SEQUENCING SYSTEM

PRECISION DECANTING WITH ADVANCED PROCESS

DESIGN, EQUIPMENT AND CONTROL

TECHNOLOGY

TREATMENT SYSTEMS

SBR-PLUS™

TRUE BATCH SEQUENCING SYSTEM

PRECISION DECANTING WITH ADVANCED PROCESS

DESIGN, EQUIPMENT AND CONTROL

TECHNOLOGY

TREATMENT SYSTEMS

SBR-PLUS™

TRUE BATCH SEQUENCING SYSTEM

PRECISION DECANTING WITH ADVANCED PROCESS

DESIGN, EQUIPMENT AND CONTROL

TECHNOLOGY

TREATMENT SYSTEMS

SBR-PLUS™

TRUE BATCH SEQUENCING SYSTEM

PRECISION DECANTING WITH ADVANCED PROCESS

DESIGN, EQUIPMENT AND CONTROL

TECHNOLOGY

TREATMENT SYSTEMS

SBR-PLUS™

TRUE BATCH SEQUENCING SYSTEM

PRECISION DECANTING WITH ADVANCED PROCESS

DESIGN, EQUIPMENT AND CONTROL

TECHNOLOGY

TREATMENT SYSTEMS

SBR-PLUS™

TRUE BATCH SEQUENCING SYSTEM

PRECISION DECANTING WITH ADVANCED PROCESS

DESIGN, EQUIPMENT AND CONTROL

TECHNOLOGY

TREATMENT SYSTEMS

SBR-PLUS™

TRUE BATCH SEQUENCING SYSTEM

PRECISION DECANTING WITH ADVANCED PROCESS

DESIGN, EQUIPMENT AND CONTROL

TECHNOLOGY

TREATMENT SYSTEMS

SBR-PLUS™

TRUE BATCH SEQUENCING SYSTEM

PRECISION DECANTING WITH ADVANCED PROCESS

DESIGN, EQUIPMENT AND CONTROL

TECHNOLOGY

TREATMENT SYSTEMS

SBR-PLUS™

TRUE BATCH SEQUENCING SYSTEM

PRECISION DECANTING WITH ADVANCED PROCESS

DESIGN, EQUIPMENT AND CONTROL

TECHNOLOGY

TREATMENT SYSTEMS

SBR-PLUS™

TRUE BATCH SEQUENCING SYSTEM

PRECISION DECANTING WITH ADVANCED PROCESS

DESIGN, EQUIPMENT AND CONTROL

TECHNOLOGY

TREATMENT SYSTEMS

SBR-PLUS™

TRUE BATCH SEQUENCING SYSTEM

PRECISION DECANTING WITH ADVANCED PROCESS

DESIGN, EQUIPMENT AND CONTROL

TECHNOLOGY

TREATMENT SYSTEMS

SBR-PLUS™

TRUE BATCH SEQUENCING SYSTEM

PRECISION DECANTING WITH ADVANCED PROCESS

DESIGN, EQUIPMENT AND CONTROL

TECHNOLOGY

TREATMENT SYSTEMS

SBR-PLUS™

TRUE BATCH SEQUENCING SYSTEM

PRECISION DECANTING WITH ADVANCED PROCESS

DESIGN, EQUIPMENT AND CONTROL

TECHNOLOGY

TREATMENT SYSTEMS

SBR-PLUS™

TRUE BATCH SEQUENCING SYSTEM

PRECISION DECANTING WITH ADVANCED PROCESS

DESIGN, EQUIPMENT AND CONTROL

TECHNOLOGY

TREATMENT SYSTEMS

SBR-PLUS™

TRUE BATCH SEQUENCING SYSTEM

PRECISION DECANTING WITH ADVANCED PROCESS

DESIGN, EQUIPMENT AND CONTROL

TECHNOLOGY

TREATMENT SYSTEMS

SBR-PLUS™

TRUE BATCH SEQUENCING SYSTEM

PRECISION DECANTING WITH ADVANCED PROCESS

DESIGN, EQUIPMENT AND CONTROL

TECHNOLOGY

TREATMENT SYSTEMS

SBR-PLUS™

TRUE BATCH SEQUENCING SYSTEM

PRECISION DECANTING WITH ADVANCED PROCESS

DESIGN, EQUIPMENT AND CONTROL

TECHNOLOGY

TREATMENT SYSTEMS

SBR-PLUS™

TRUE BATCH SEQUENCING SYSTEM

PRECISION DECANTING WITH ADVANCED PROCESS

DESIGN, EQUIPMENT AND CONTROL

TECHNOLOGY

TREATMENT SYSTEMS

SBR-PLUS™

TRUE BATCH SEQUENCING SYSTEM

PRECISION DECANTING WITH ADVANCED PROCESS

DESIGN, EQUIPMENT AND CONTROL

TECHNOLOGY

TREATMENT SYSTEMS

SBR-PLUS™

TRUE BATCH SEQUENCING SYSTEM

PRECISION DECANTING WITH ADVANCED PROCESS

DESIGN, EQUIPMENT AND CONTROL

TECHNOLOGY

TREATMENT SYSTEMS

SBR-PLUS™

TRUE BATCH SEQUENCING SYSTEM

PRECISION DECANTING WITH ADVANCED PROCESS

DESIGN, EQUIPMENT AND CONTROL

TECHNOLOGY

TREATMENT SYSTEMS

SBR-PLUS™

TRUE BATCH SEQUENCING SYSTEM

PRECISION DECANTING WITH ADVANCED PROCESS

DESIGN, EQUIPMENT AND CONTROL

TECHNOLOGY

TREATMENT SYSTEMS

SBR-PLUS™

TRUE BATCH SEQUENCING SYSTEM

PRECISION DECANTING WITH ADVANCED PROCESS

DESIGN, EQUIPMENT AND CONTROL

TECHNOLOGY

TREATMENT SYSTEMS

SBR-PLUS™

TRUE BATCH SEQUENCING SYSTEM

PRECISION DECANTING WITH ADVANCED PROCESS

DESIGN, EQUIPMENT AND CONTROL

TECHNOLOGY

TREATMENT SYSTEMS

SBR-PLUS™

TRUE BATCH SEQUENCING SYSTEM

PRECISION DECANTING WITH ADVANCED PROCESS

DESIGN, EQUIPMENT AND CONTROL

TECHNOLOGY

TREATMENT SYSTEMS

SBR-PLUS™

TRUE BATCH SEQUENCING SYSTEM

PRECISION DECANTING WITH ADVANCED PROCESS

DESIGN, EQUIPMENT AND CONTROL

TECHNOLOGY

TREATMENT SYSTEMS

SBR-PLUS™

TRUE BATCH SEQUENCING SYSTEM

PRECISION DECANTING WITH ADVANCED PROCESS

DESIGN, EQUIPMENT AND CONTROL

TECHNOLOGY

TREATMENT SYSTEMS



- **Positive Solids Exclusion**
- **V-Notch Weir Depth Adjustable**
- **Constant Rate Discharge**
- **Avoids First Flush Problems**
- **No Weir Sealing Required**
- **No Decant Valve Required**
- **Energy Efficient Wilfley Weber Aeration**

Typical SBR-Plus Effluent Quality

BOD ₅ :	< 10 ppm
TSS:	< 10 ppm
NH ₃ -N:	< 1 ppm
TN:	< 6 ppm
TP:	< 1 ppm

Site Specific Process Results Fully Guaranteed



Positive scum exclusion.

THE ADVANTAGES OF SBR BATCH SEQUENCING IN A PRACTICAL PRECISION TECHNOLOGY

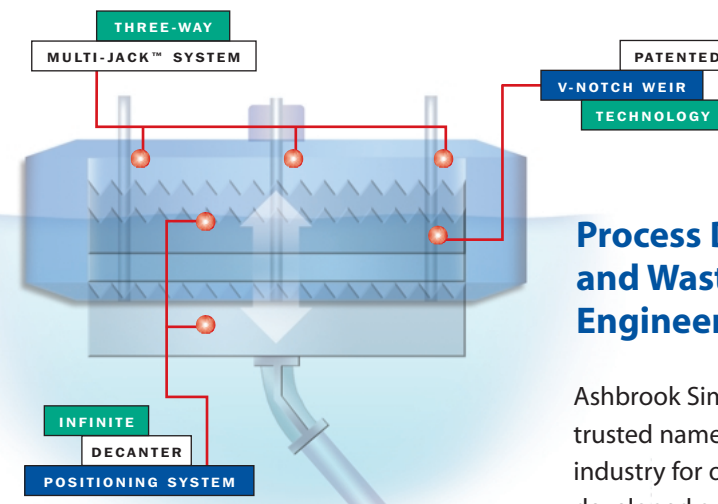
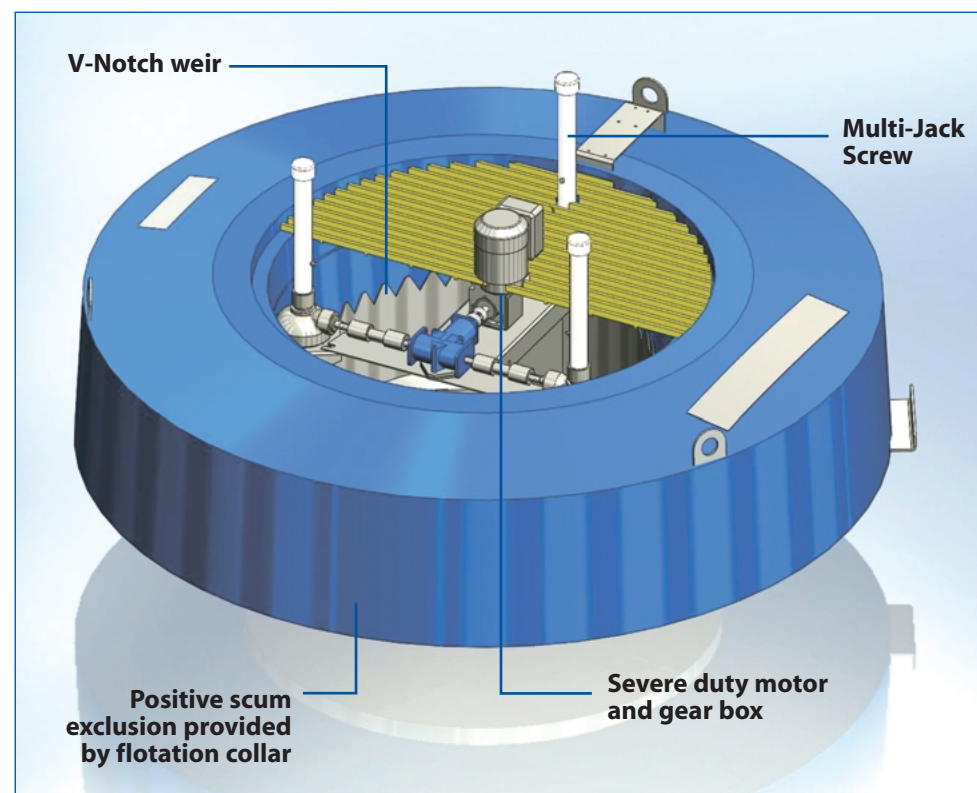
The SBR-Plus™ True Batch Sequencing System brings the advantages of an electro-mechanical controlled precision decant rate to batch reactor wastewater treatment. The combination of a circular V-Notch weir and three-way Multi-Jack™ ensures a finely controlled decant flow rate, which is determined by the control system set point. The decant flow rates can be adjusted to prevent disturbance of settled solids, eliminating first flush problems and maintaining a uniform flow rate during the entire decant cycle, resulting in the production of a high quality effluent. The fiberglass encased high density foam flotation collar prevents both the

accumulation of solids and the withdrawal of surface scum at the weir.

With the SBR-Plus, weir sealing is eliminated as an issue of concern, as is the need for a decant valve.

The SBR-Plus System is provided complete with: floating decanters, blowers, aeration system, direct drive mixers, waste sludge pumps, process control center, and motorized influent and air control valves.

The SBR-Plus System is provided with a process guarantee specific to your application.



Process Design and Wastewater Engineering Expertise

Ashbrook Simon-Hartley has been a trusted name in the wastewater industry for over four decades and has developed an enviable reputation for knowledge and expertise in wastewater process design and engineering. The Ashbrook Simon-Hartley team is uniquely equipped to combine process design with controls and automation technologies. This expertise and technology provides you with an optimized system design and operation, creating an operator-friendly and minimal maintenance environment.

Plus, Ashbrook Simon-Hartley provides comprehensive support, which includes complete training on all control system (dial-up or Internet-based) programming interfaces.

For Municipal and Industrial Applications

The SBR-Plus True Batch Sequencing System is ideal for municipal domestic sewage applications and performs equally well for industrial wastewater treatment. It is easy to retrofit the SBR-Plus into existing plants and into earthen lagoons.

It is applicable to biodegradable wastewaters for BOD, COD, TSS removal, and nutrient removal (nitrogen and/or phosphorus).

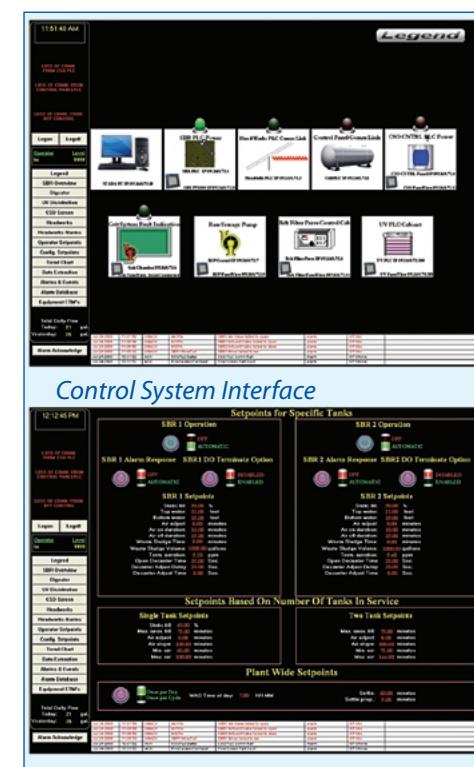


Full floor coverage diffused aeration is standard, optional retrievable diffusers are shown.



Applicable To All Basin Geometries

- **Square or Rectangular Concrete Basins**
- **Rectangular Steel Package Plants**
- **Circular Steel Tanks**
- **Field-Erected Concentric Circular Steel Tanks**
- **Retrofit of Existing Earthen Basins**
- **Multiple Decanters In One Basin**
- **Retrievable Diffusers Available**



Flow paced or optional time based control can be accommodated.